

Mafuza Gasmin, Assistant Professor, Sociology, CC

Mafuza Gasmin, Assistant Professor, Sociology, CC 9

HOME

SOCIOLOGY DICTIONARY

QUIZZES/ MOCK TESTS

BASIC CONCEPTS

INTRODUCTION TO SOCIOLOGY

INDIAN SOCIOLOGY

CIVIL SERVICES

POLITICAL SOCIOLOGY

SOCIAL STRATIFICATION

RELIGION

GENDER

KINSHIP

RESEARCH METHODS

PUBLISH YOUR ARTICLES

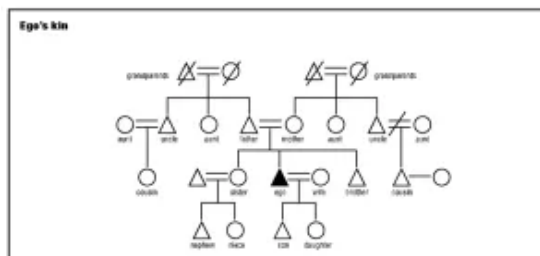
SOCIOLOGY OPTIONAL

CONTACT US

Kinship: Meaning, Types, Degree, Importance, Descent, lineage

OCTOBER 16, 2017 BY [SOCIOLOGY GROUP](#)

Kinship is one of the most important organizing components of society. From East to West or North to South you will find this everywhere in the society. This social institution ties individuals and groups together and establishes a relationship between them.



The basic type of bond is marriage and reproduction. Kinship refers to a bunch of relationship and relatives, these are based on blood relationship (consanguineal) or marriage (affinal)

Some basic definitions by different people:

"The social relationships deriving from blood ties (real and supposed) and marriage are collectively referred to as kinship."

– Abercrombie et al

'Kinship is the recognition of relationships between persons based on descent or marriage. If the relationship between one person and another is considered by them to involve descent, the two are consanguine ("blood") relatives. If the relationship has been established through marriage, it is affinal.' – L. Stone

Types of Kinship

The kinships are based on two broad aspects 1) **Birth** (Blood relationships) 2) **marriages**

1. **Consanguineal kinship:** this kinship is based on blood the relationship meaning the relationship between parents and children also among immediate siblings. It is said to be the basic and universal in relationships.
2. **Affinal kinship:** this kinship is based on marriage. The relationship between husband and wife is the basic kin relations.

Kinship and its degree:

The relationship among individuals or people depends on the level of closeness and separation of its relationship. Closeness and distance are based on how these individuals are related to each other.

Primary Kinship

Primary kinship is based on direct relations. Individuals or people that are directly related are said to be primary in nature. Primary kinship is further divided into two:

Primary consanguineal kinship: this kin refers to that kin that is directly related to each other by birth. For instance association with or amongst parents and children and among siblings.

Primary Affinal kinship: the relation that takes place with marriage is said to be Primary Affinal kinship. The direct primary affinal kinship is the husband-wife relationship.

Secondary kinship

Secondary kinship alludes to the primary kinship. As it were, the individuals who are specifically identified with primary kinship (i.e. primary kin of our primary kinship) become secondary kinship. In other words, it means relations that come through primary kinship are said to be secondary kinship.

There are two types of Secondary kinship:

Secondary Consanguineal kinship:

This kind of kin refers to primary consanguineal kinship. The basic example of secondary consanguineal kinship would be the relationship between grandparents and grandchildren.

Secondary Affinal kinship:

This kind of kinship refers to primary affinal kinship primary kinship. For example, Anita's husband is her primary affinal kinship and for Anita's husband, her parents and siblings are his primary kin. Therefore meaning the relationship between Anita and her sister in law/ brother in law or parents in law and more vice versa is said to be Secondary Affinal kinship. Also, your sibling's spouse and his/her parents in law will be his secondary affinal kinship.

Tertiary kinship:

Tertiary kinship is the secondary kinship of our primary kin or primary kin of our secondary kinship. For example, wife of our brother in law would be related to us as tertiary kin.

Tertiary kinship is further divided into two:

Tertiary consanguineal kinship:

An example of tertiary consanguineal kin would be our primary consanguineal kin (i.e. our parents) primary kin (i.e. our parents' parents meaning our grandparents) primary kin. (i.e. our grandparents' parents)

Tertiary Affinal kinship:

It means primary affinal kin or secondary affinal kin or primary affinal kin or secondary kin. For example our spouse's grandparents or grand uncles and aunts.

Descent: it refers to the socially existing recognized biological relationships between people in society. Every society looks at the fact that all offspring and children descend from their parents and usually it is said **biological relationship** exists between parents and children. Therefore descent is used to trace an individual's ancestry.

Lineage: it refers to the line from which descent is traced. This is done by looking into fathers' line or mothers line or from both the lines. Descent and lineage work together.

Importance of Kinship:

- The kinship system maintains unity, harmony, and cooperation among relationships.
- Kinship sets guidelines for communication and interactions among people.
- Where marital taboo exists decides who can marry whom.
- Kinship regulates the behavior of different kin.
- Kinship act as a watchdog of social life.
- In rural areas or in the **tribal society** kinship defines the rights and obligations of the family and marriage also the system of production and political power.
- It helps people to better understand their relationship with each other.
- It builds and develops and helps better relate to one another in society.

Reference

<https://en.wikipedia.org/wiki/Kinship>

Kinship: Meaning, Types and Other Details

ADVERTISEMENTS: Kinship: Meaning, Types and Other Details! Kinship is one of the main organizing principles of society. It is one of the basic social institutions found in every society. This institution establishes relationships between individuals and groups. People in all societies are bound together by various kinds of bonds. The most basic bonds are those ... Continue reading

Your Article Library

0

Share this:



Related



[kinship organization in India: Irawati Karve](#)
October 20, 2017
In "Irawati Karve"

[Unilateral Descent: Sociology of Kinship Notes](#)
Unilateral descent is a system of kinship in which descent is one can trace one's ancestors through only one gender, either the male or the female. Based on November 30, 2019
In "Basic Concepts"

[Difference between Family and Household : Sociology Notes](#)
Households and families are basic units of analyzing demography. They are often used as interchangeable words but there's a distinction between March 31, 2020
In "Civil Services"

FILED UNDER: [INDIAN SOCIOLOGY](#), [SOCIOLOGY OF KINSHIP](#)

About Sociology Group

Hello, I am Samreen Sagheer pursuing Journalism and Mass Communication from Amity. I am an aspiring writer, ready to give my best. I like to keep things simple and straightforward just like my personality.

CATEGORIES

- > [Sociology Dictionary](#)

- > [Basic Concepts](#)

- > [Sociology Optional](#)

- > [Branches of sociology](#)

- > [Civil Services](#)

- > [Sociology Of Religion](#)

- > [Contributions to Sociology](#)

- > [Ambedkar](#)

- > [Auguste Comte](#)

- > [Andre betelle](#)

- > [Emile Durkheim](#)

- > [Irawati Karve](#)

- > [M.N.Srinivas](#)

- > [Max weber](#)

- > [Economic Sociology](#)

- > [Environmental Sociology](#)

- > [Gender Sociology](#)

- > [Indian Sociology](#)

- > [Importance of Studying Sociology](#)

- > [Introduction to sociology](#)

- > [Political Sociology](#)

- > [Sociology of Kinship](#)

- > [Social Stratification](#)

- > [Short Notes](#)

- > [Social Issues](#)

- > [Sociology and Law](#)

- > [Sociology and Media](#)

- > [Urban Sociology](#)

- > [Journalism](#)

- > [Migration](#)

> Minorities

> Social Sciences

> Anthropology

> Criminology

> Citizenship

> Research Methods

> Research papers

> Suicide Prevention Awareness

> Sociological Thinkers

> Question Papers

RECENT ARTICLES

Higher education in India: Problems and Suggestions

General Knowledge MCQs for all Government Jobs Exams

Difference between Family and

PAGES

10 best sociology books for Beginners

About Sociology Group

An Introduction to Sociology – Concepts, Definitions and Notes
contact us

**SOCIOLOGY
DICTIONARY**

**SUBSCRIBE TO BLOG
VIA EMAIL**

Enter your email address to subscribe to this

Household :
Sociology Notes
Marx's ideas on
modes of production
Feminization of
Poverty

Copyright
infringement
takedown notification
policy
Copyright
infringement
takedown notification
template
Disclaimer
Privacy Policy
Publish Your Articles
Sociology Quiz for All
entrance exams
Terms of Service

blog and receive
notifications of
new posts by
email.

Join 7,536 other
subscribers.

SUBSCRIBE

FOLLOW US

Copyright © 2020 · News Pro on Genesis Framework · WordPress · Log in